

Features:

- 2 ~ 12 circuits available
- Material: LCP, Black color
- Contact: High conductivity copper
- Finished: Tin-plated
- .043"(1.08mm) square pin
- Mates with ALEX 5702-xx housing

Specification:

- Current rating: With tinned AWG copper wire

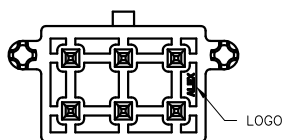
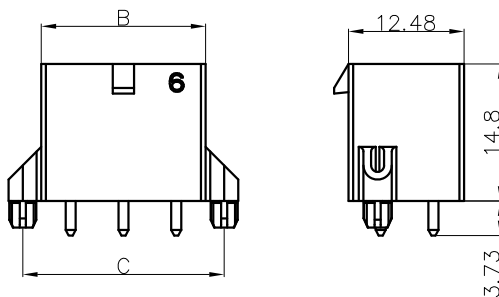
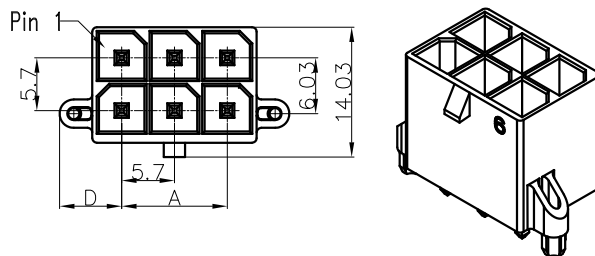
Wire size		N			
AWG	Max. Ins. Dia.	2	4	6	8~12
#12 · 4.0mm ²	.162"(4.11mm)	23	20	18	16
#14 · 2.5mm ²	.148"(3.75mm)	21	17	15	13
#16 · 1.5mm ²	.125"(3.18mm)	17	15	13	12

- Voltage rating: 600V AC (RMS) or 600V DC Max.
- Contact resistance: 10mΩ Max.
- Insulation resistance: 1000MΩ Min.
- Dielectric withstanding voltage: 2200V AC/minute
- Ambient temperature range: -40°C ~ 105°C

Dimensional Information (mm)

Circuits	2	N
Dim. A	N/A	2.85xN-5.7
Dim. B	8.35	2.85xN+0.65
Dim. C	12.34	2.85xN+4.64
Dim. D	7.7	6.7
Dim. E	6.17	5.17

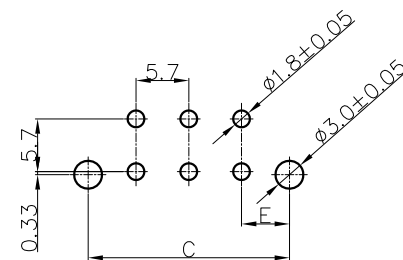
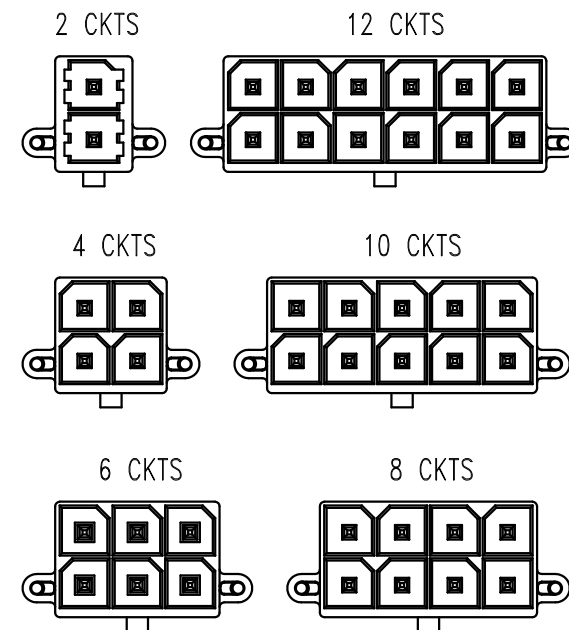
&& N = 4 ~ 12



P/N Information

P/N	Feature
5703-xx	With LOGO "ALEX"
5703-xx-NAX	Without LOGO "ALEX"

Rev.	DESCRIPTION	DATE	APPD.
1	变内部视图	2016 08.22	刘勇波



P. C. board layout

CUSTOMER APPROVAL

RoHS compliant

UNLESS OTHERWISE SPECIFIED TOLERANCE
 .000 ± 0.15 (mm)
 .00 ± 0.25 (mm)
 .0 ± 0.40 (mm)

UNIT:mm
 Material:
 Finish:
 Q'ty:

APPROVAL

DRAWN: 刘勇波
 DESIGNED:
 CHECKED:
 APPROVED:

DATE

2015
12.09



ALEX CONNECTOR CO., LTD.
 ALEXCONN Electronic(ShenZhen)CO.,LTD.

TITLE: .224"(5.7mm) Vertical Header

P/N: 5703-xx Series

Eng. No.: 5703W-xx00P6-50